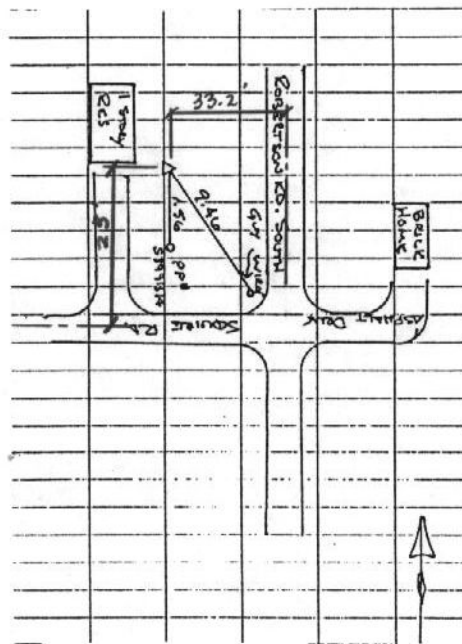


# CITY OF MURRAY CONTROL MONUMENT CARD

DESIGNATION: BM B7  
TYPE: CONCRETE MONUMENT W/ CITY DISK  
DATE SET: JUNE 1997 QUAD: MURRAY, KY.  
HORIZONTAL DATUM: NAD-83 VERTICAL DATUM: NAVD-88  
STATE: KENTUCKY COUNTY: CALLOWAY ZONE: KY. S 1602

NORTHING: 1746466.74 FT  
EASTING: 876540.73 FT  
ELEVATION: 552.13 FT (GPS)  
LATITUDE: N 36°35'44.56464" LONGITUDE: W 088°21'08.16566"  
SCALE: CONVERGENCE:  
PLANE AZI. TO AZI. MARK:

To Reach: Located at the intersection of Squire Rd.  
and Robertson Rd. South.



NOT TO SCALE



GRW Aerial Surveys, Inc.  
801 Corporate Dr. Lexington Ky. 40503  
(606)223-3999